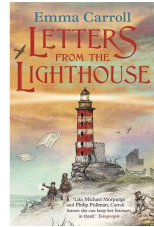


ENGLISH

This term the class text will be finishing off 'Wolf Wilder' by Katherine Rundell and starting 'Letters from the Lighthouse' by Emma Carroll. They will be the inspiration for our writing of letters, balanced arguments and poetry. Children will fully understand the purpose of the genre they are writing and the skills they need to use to create the relevant impact on the reader.

In reading, we will be focusing on embedding inference, retrieval and vocabulary in preparation for Year 7.



HUMANITIES

This history project is called 'Britain at War' and will be for the whole of Summer Term. In this half term we will be teaching the children about the causes, events and consequences of the First World War.

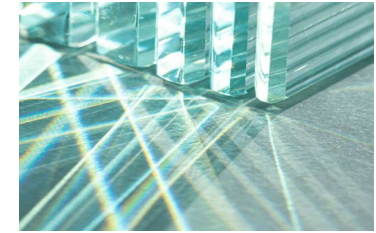
There will be a focus on those who volunteered in the war, what life was like in the trenches and weaponry.



Heathfield
PRIMARY SCHOOL

SCIENCE

This term, children will be looking at the topic 'Light Theory'. This project teaches children about the way that light behaves, travelling in straight lines from a source or reflector, into the eye. They explore how we see light and colours, and phenomena associated with light, including shadows, reflections and refraction.



MATHS

This half term, children will be going over the key aspects of statistics and geometry. We will be covering a range of topics in preparation for Year 7. The children will continue using their knowledge of four operations to support their learning.



YEAR 6 SUMMER 2

D&T

This term, they will be studying a project called, 'Make Do and Mend'. This project will teach children a range of simple sewing stitches, including ways of recycling and repurposing old clothes and materials.



COMPUTING

This term, children will be using Spheros to complete a chariot challenge. They will design and build a chariot. They will then use simple block code to move the Sphero and to identify any errors in their code and debug them. They will also identify the impact of speed and time when programming.

PE

This term, children will be developing and practising athletic skills. The pupils are set challenges for distance and time that involve using different styles and combinations of running, jumping and throwing.



MUSIC

This term children will be learning songs for their Year 6 leavers assembly and incorporating some musical instruments into the production.

RE AND PSHE

This term in PSHE the children will continue to learn about what will change as they become more independent and how their friendships will change as they grow. In RE, we will continue looking at the dispositions: Expressing Joy (where they focus on Eid ul Fitr and Eid ul Adha) and Appreciating Beauty (The Lord's Prayer).